

# SERVE TALLAHASSEE

## Move & Expansion

Serve Tallahassee is USDA certified food pantry, in partnership with Second Harvest of the Big Bend.



### Current SERVE Offerings

Food distribution to families in need on Saturday and Wednesday. This food provides supplementary food so families in our neighborhood do not go hungry.

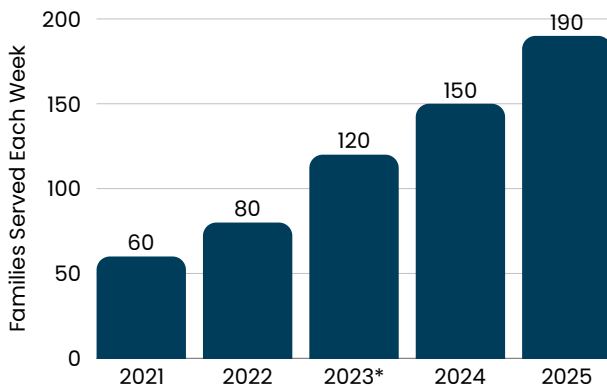
Meeting space for AA, Growth Groups, and others.

**Every family receives roughly \$50 in food each week.**

- Shelf Stable Food (est. \$30-\$40)
- Frozen Meat (est. \$10)
- Fresh Produce (est. \$10)

### The Need is Growing

The hunger needs of our community are growing rapidly due to a number of reasons, including reduced legislative funding for programs such as Food Stamps.



We have grown **217% over the past 4 years** and we expect the needs to increase.

### Why is this Important?

To meet the increase in demand, we propose moving to the back bay. This will:

- **Increase storage** to meet the growing demand
- Increase **workability** on Saturdays
- Provide additional opportunities to **expand outreach** during the week

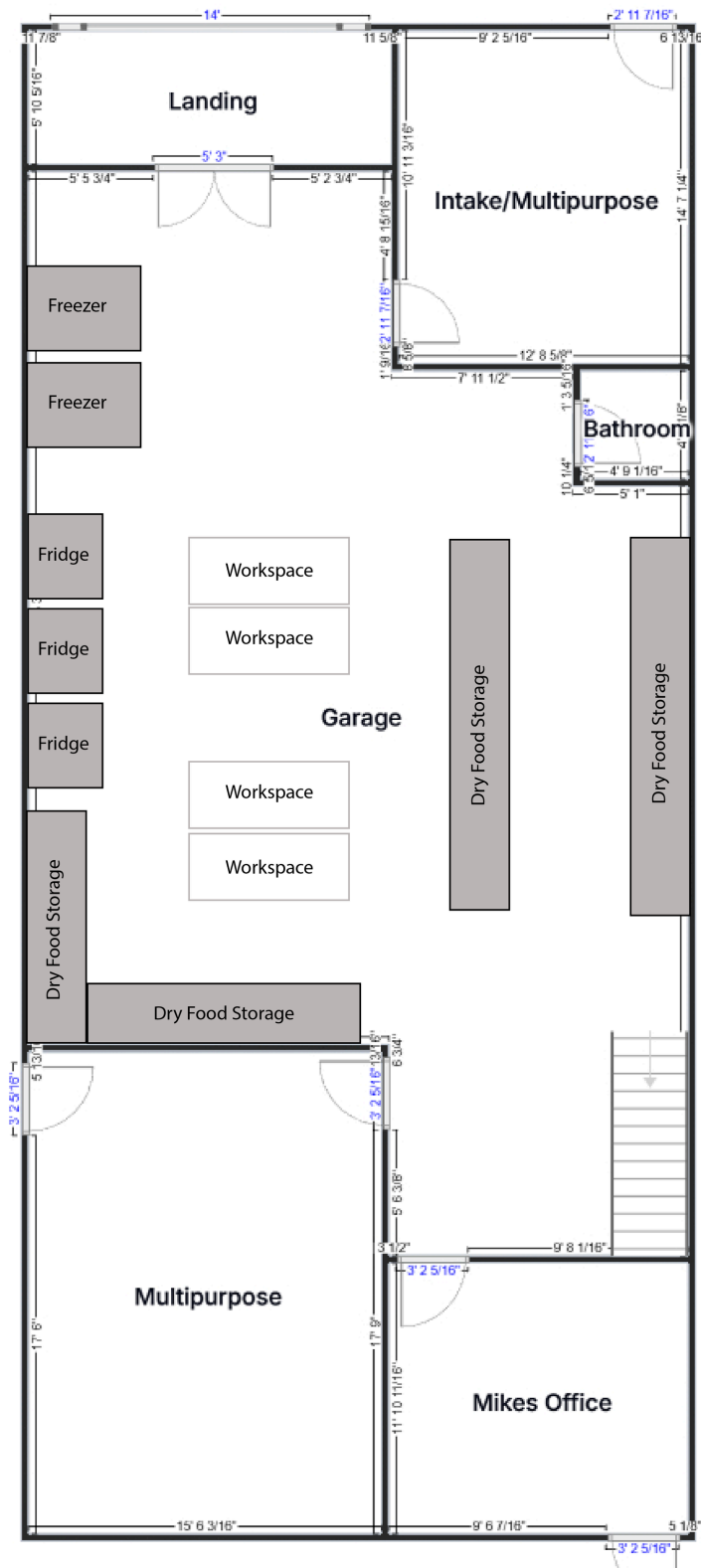
### Proposed Budget & Needs

Wise Council has collected the following best bid:

- **\$11,000** AC & Duct work
- **\$2,400** Electrical
- **\$29,750** Structural

Additional elements will be repurposed including: stairs, doors, pantry shelving, freezers, ceiling tiles, and building materials.

# Proposed Floorplan - subject to change



The new space is approximately 250 sqft larger than the current space. It will house all of the current items plus additional freezers, a walk-in refrigerator, and much-needed workspace for volunteers to assemble bags. The current layout for Serve is not as open as the one here, though this is an example only and not a final arrangement.

The second floor will be an open storage space with shelving for tools, building supplies, and paint. It has the opportunity to be used for additional serve storage in the future.

The multipurpose rooms provide an additional 300 sqft of space for programming and outreach. The current Serve space has to share the food workspace with outreach.

To donate a specific donation to Serve Tallahassee for continued food and the overall enlargement of space, use the QR code below and select Local Outreach.



For additional questions please reach out to : [office@element3.org](mailto:office@element3.org) or [mike@element3.org](mailto:mike@element3.org)